

FERNALD PRESERVE

This 1050-acre property has now come full circle. The property's natural features have been restored, with manmade wetlands, an on-site disposal cell, large tracts of open water, upland forests and the beginnings of tall grass prairies.



MOUND, OH

At the Mound DOE site, off-site disposal was chosen because the site's geological and hydrogeological conditions are not conducive to an on-site facility. Waste materials were shipped off-site to DOE or commercial facilities.

IDAHO NATIONAL LABORATORY

At the Idaho Site, on-site disposal was chosen for contaminated soils and soils containing debris, but other materials are shipped off-site to DOE or commercial facilities for disposal.

HANFORD, WA

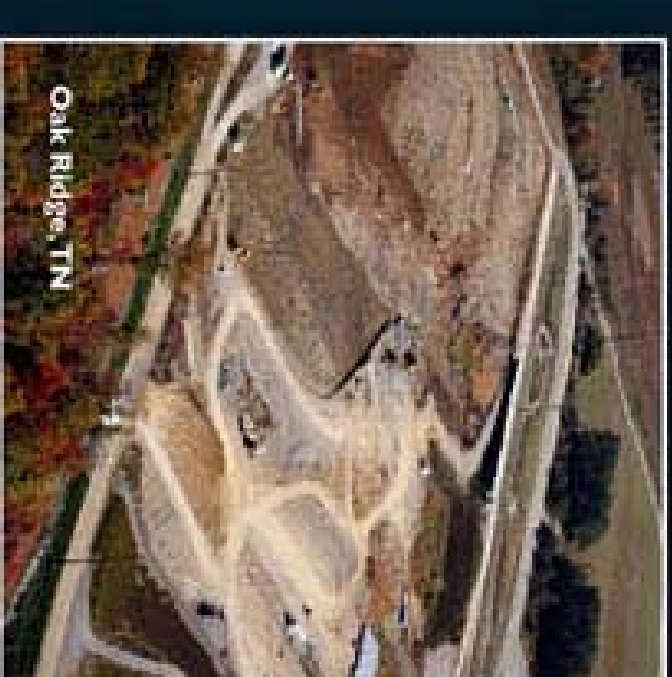
The on-site Environmental Restoration Disposal Facility at Hanford was built in 1996 near the center of the 586-square-mile DOE facility. It remains in operation today for disposal of wastes generated by environmental cleanup work.



What others have done

OAK RIDGE, TN

The DOE site is still undergoing closure. An on-site disposal facility built to handle waste generated by cleanup. Site picked with active community and Citizens Advisory Board involvement.



WELDON SPRING, MO

The Weldon Spring Site began as a World War II ordnance plant and was converted to a nuclear facility. An on-site disposal facility was built. The site is now closed and part of a conservation area.



ROCKY FLATS, CO

At this site (where triggers were made for nuclear weapons), the decision was made to ship waste materials off-site. About 800 buildings were dismantled and the material disposed of. Today, the 6400-acre site is a wildlife refuge.

