



Ongoing Activities



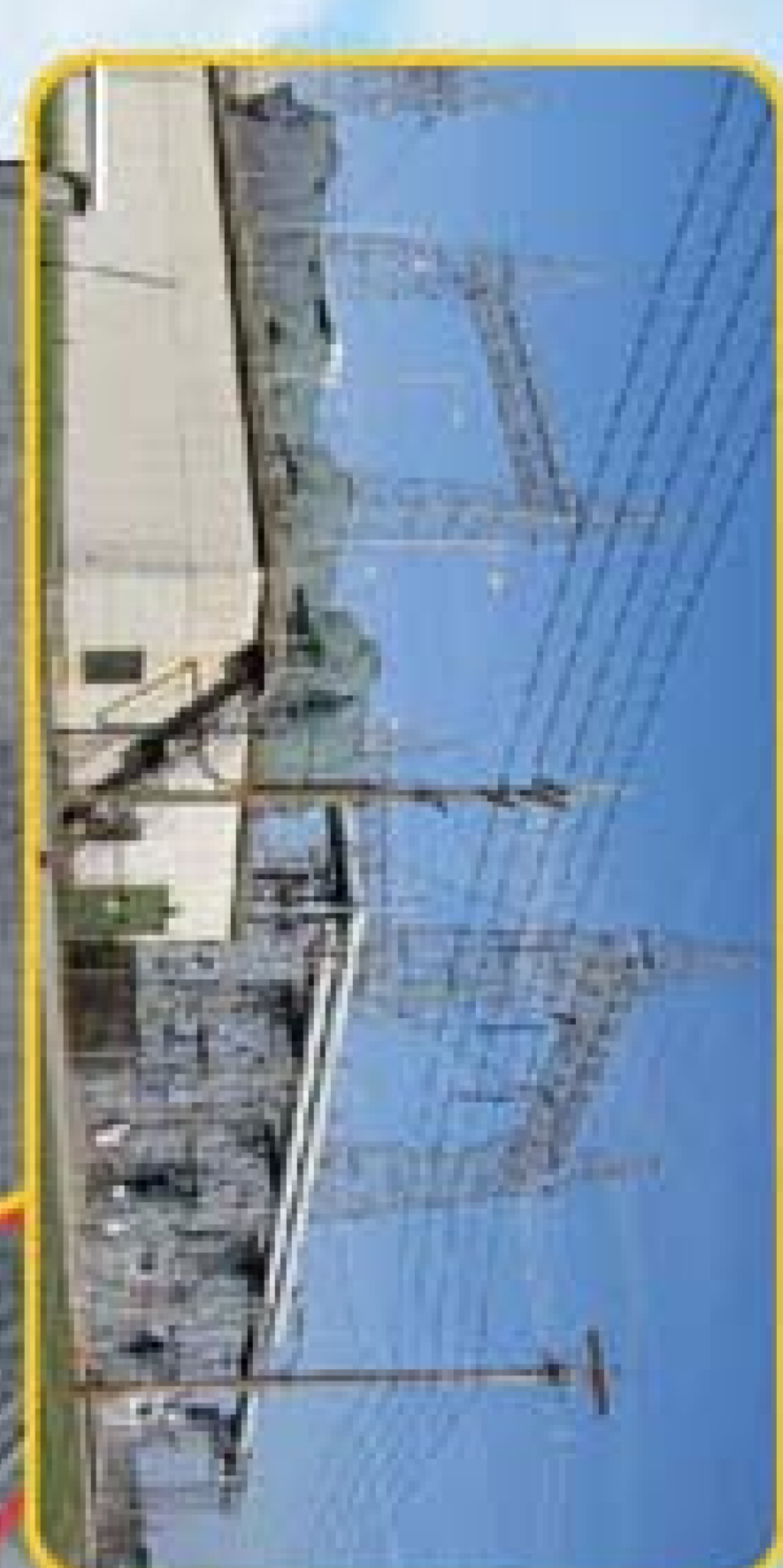
Further characterization of X-344C



X-740 Waste Oil Handling Facility Plume:
Phytoremediation and continued oxidant injections



D&D of X-760 Chemical Engineering Building*



D&D of X-533 switchyard complex*



D&D of X-633 cooling towers complex*



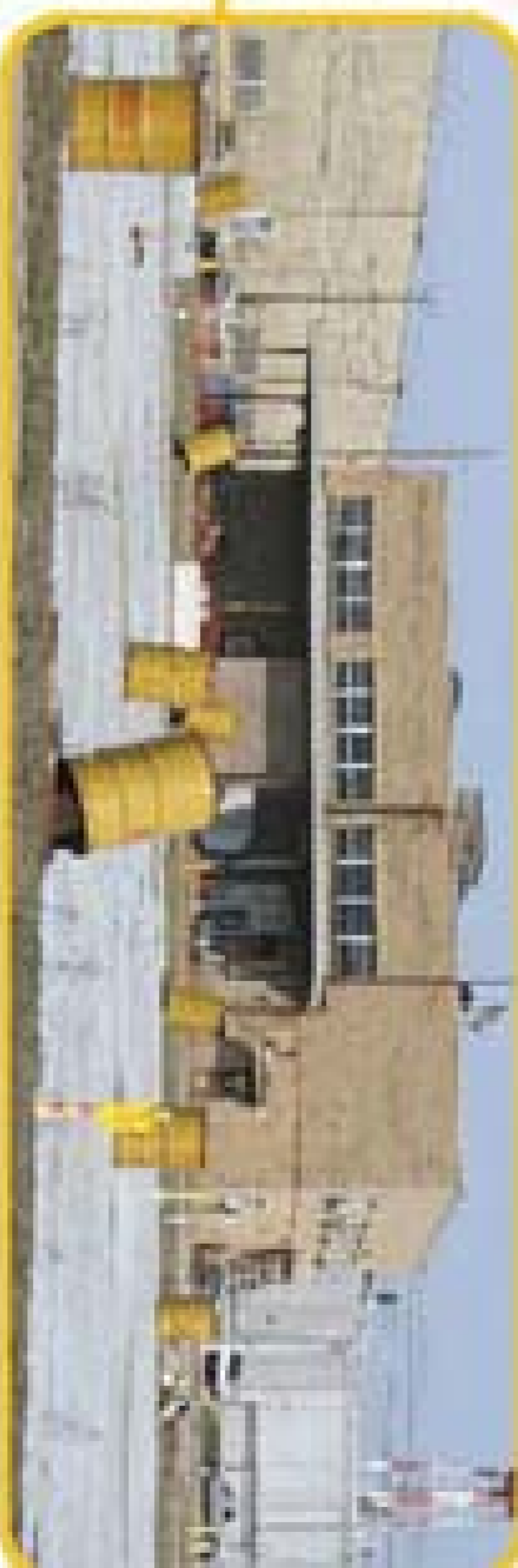
701 B source (soil) removal*



Further characterization of 7-Unit area



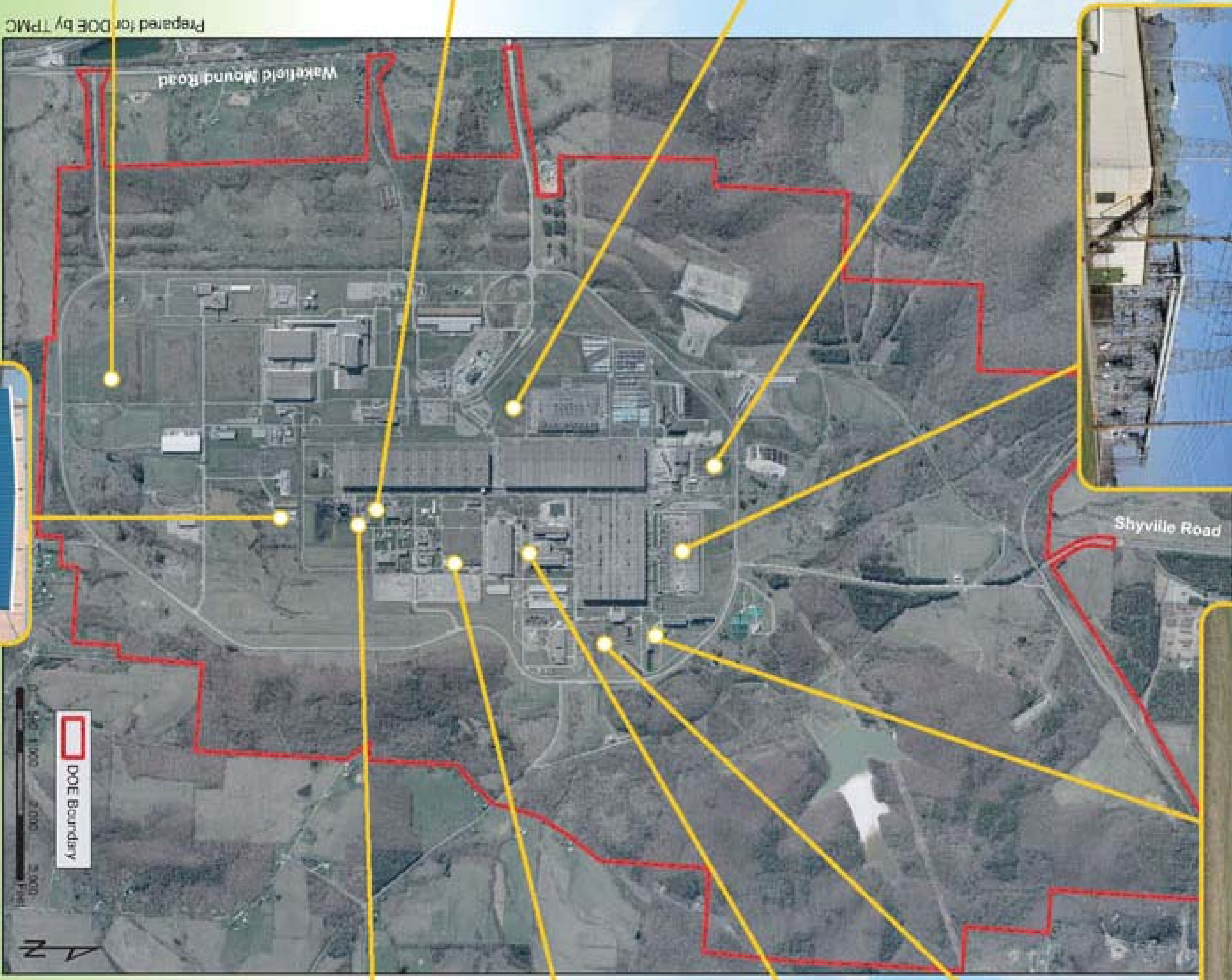
D&D of X-746 building



X-770 pad and TCE-contaminated soil removal



X749/X-120 Plume: Phytoremediation (3,000 poplar trees) to treat TCE-contaminated groundwater (planted in '02-'03). Also operate extraction wells that contain TCE-contaminated groundwater within plant boundaries



Prepared for DOE by TPMC

DOE Boundary



One of four groundwater treatment facilities that treat 26M gallons/year from 5 plume areas

OTHER ACTIVITIES

- Routine Monitoring (air, rad levels, ground and surface water, sediment, soil, vegetation, biota)
- Removal of cylinders/containers containing radioactive materials
- Repackaging/disposition of excess uranium materials*
- Disposition of large low enriched uranium cylinders*

KEY

DOE boundary

* Stimulus Project